



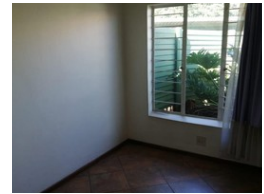
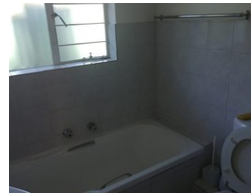
**Frank Boonzaier**  
Non-Principal Property  
Practitioner  
Registered with PPRA  
(FFC 055 852 1)  
072 114 3336  
frank@visionprop.co.za

Contact Agents  
**012 846 3030**

Unit 203  
First Floor, Lynwood Lane Retail Centre  
Lynnwood Road  
Equestria  
Pretoria  
0050



Web Ref RL1153



**R8,300 pm**

**Lease Period** 12 months  
**Annual Escalation** -

**Availability** 01 Jun 2025 **Deposit** R6,900

 2  1  1

2 bedroom Simplex with private garden

Don't miss out. !

This neat and spacious property is situated in Annlin Pretoria. It is close to popular shopping centers and all major roads.

The property has 2 bedrooms, 1 full bathroom, an open plan living area, modern kitchen and the unit is tiled throughout. Build in Fireplace and swimming pool in complex. There is Garage and visitors parking. It is a modern style townhouse. It is in a very safe and secure area.

Occupation Immediately

## Features

Interior		Exterior	
Bedrooms	2	Garages	1
Bathrooms	1	Security	No
Recep. Rooms	2	Pool	Yes
Furnished	No	Views	False

